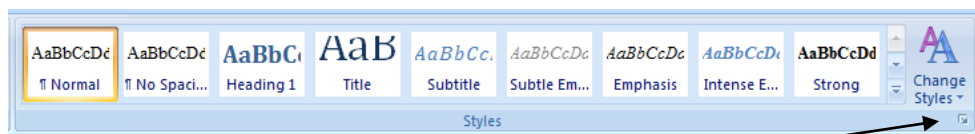
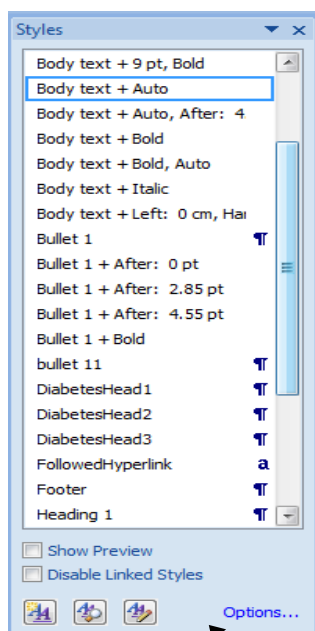


## View All Styles

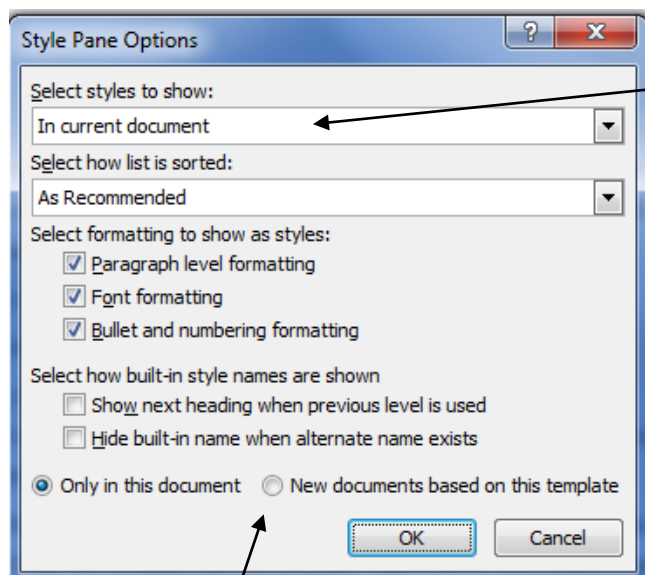
Do the following to view all styles(only document styles and old 2003 styles) in Word 2007.



Click on the arrow in the right hand corner of the styles group. The styles task pane opens.



Click on Options. The Styles Pane Options opens.



Change Select styles to show to: All styles

When you click OK, all the styles should appear in the Styles task pane.

Only if needed!!!!!!

To make the changes affect the current template, also select the option button at the bottom, "New documents based on this template" (This is the equivalent of the old check box "Add to template".)